



SAN DIEGO
HOUSING
COMMISSION

We're About People

San Diego Housing Commission (SDHC)
Authorization to Amend Budget to Implement Shelter Programs for
Households Displaced by Recent Storms
Housing Authority of the City of San Diego Agenda Item #1
February 6, 2024

Lisa Jones
President and Chief Executive Officer
San Diego Housing Commission



SDHC – Storm Shelter Programs

Introduction

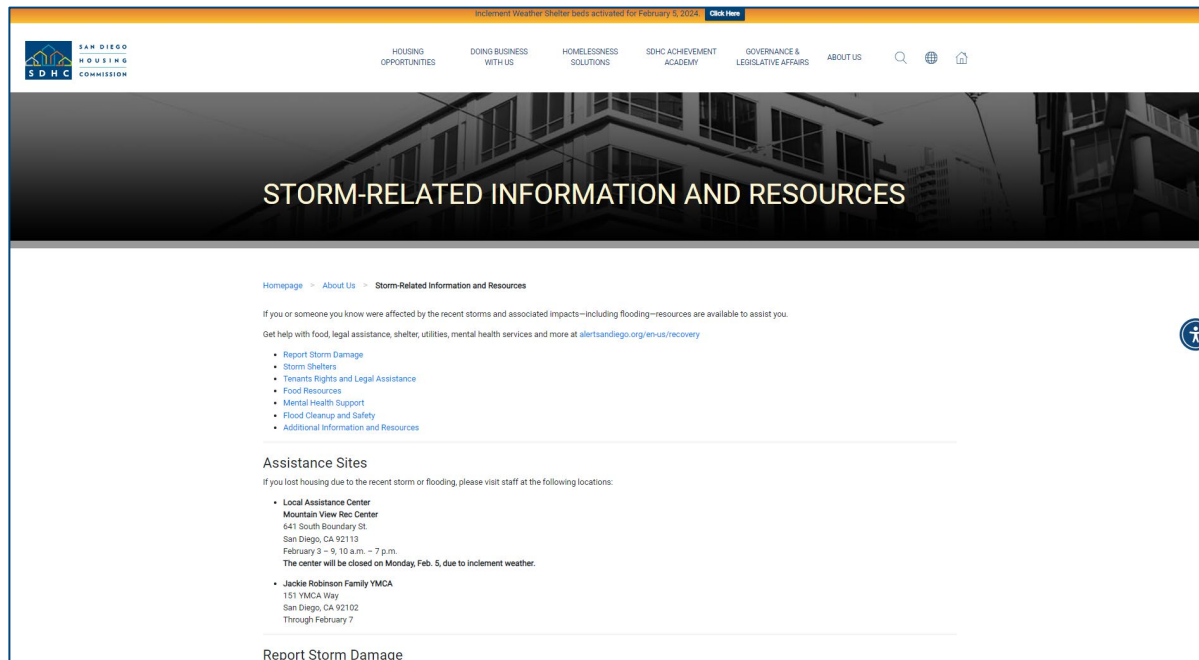
- January 22, 2024:
 - Mayor Todd Gloria declared a local state of emergency due to the record-breaking storm that day and its impacts, including flooding.
 - County of San Diego Interim Chief Administrative Officer Sarah Aghassi declared a countywide state of emergency.
- January 23, 2024: California Governor Gavin Newsom declared a state of emergency in San Diego and Ventura counties due to the storms.
- January 24, 2024: County of San Diego Board of Supervisors ratified the countywide emergency declaration.
- January 29, 2024: San Diego City Council unanimously ratified the Mayor’s emergency declaration.
- January 31, 2024: County of San Diego Board of Supervisors reallocated \$10 million of American Rescue Plan Act funds toward storm relief.



SDHC – Storm Shelter Programs

SDHC Storm Response

- Storm resources shared with impacted communities
 - Flyers in English and Spanish distributed to City Council offices, community-based organizations, and SDHC households and landlords
 - Web page and flyer: www.sdhc.org/storm



Inclement Weather Shelter beds activated for February 5, 2024 [Click Here](#)

Home page > About Us > Storm-Related Information and Resources

If you or someone you know were affected by the recent storms and associated impacts—including flooding—resources are available to assist you.

Get help with food, legal assistance, shelter, utilities, mental health services and more at alertsandiego.org/en-us/recovery

- Report Storm Damage
- Storm Shelters
- Tenants Rights and Legal Assistance
- Food Resources
- Mental Health Support
- Flood Cleanup and Safety
- Additional Information and Resources

Assistance Sites

If you lost housing due to the recent storm or flooding, please visit staff at the following locations:

- **Local Assistance Center**
Mountain View Rec Center
641 South Boundary St.
San Diego, CA 92113
February 3 – 9, 10 a.m. – 7 p.m.
- **Jackie Robinson Family YMCA**
151 YMCA Way
San Diego, CA 92102
Through February 7

Report Storm Damage

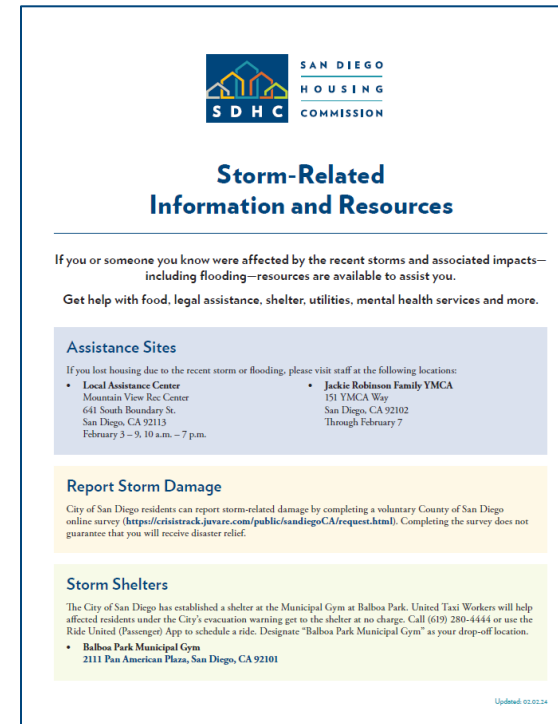
City of San Diego residents can report storm-related damage by completing a voluntary County of San Diego online survey (<https://crisistrack.juware.com/public/sandiegoCA/request.html>). Completing the survey does not guarantee that you will receive disaster relief.

Storm Shelters

The City of San Diego has established a shelter at the Municipal Gym at Balboa Park. United Taxi Workers will help affected residents under the City's evacuation warning get to the shelter at no charge. Call (619) 280-4444 or use the Ride United (Passenger) App to schedule a ride. Designate "Balboa Park Municipal Gym" as your drop-off location.

- **Balboa Park Municipal Gym**
2111 Pan American Plaza, San Diego, CA 92101

Report Storm Damage



SAN DIEGO
HOUSING
COMMISSION

Storm-Related Information and Resources

If you or someone you know were affected by the recent storms and associated impacts—including flooding—resources are available to assist you.

Get help with food, legal assistance, shelter, utilities, mental health services and more.

Assistance Sites

If you lost housing due to the recent storm or flooding, please visit staff at the following locations:

- **Local Assistance Center**
Mountain View Rec Center
641 South Boundary St.
San Diego, CA 92113
February 3 – 9, 10 a.m. – 7 p.m.
- **Jackie Robinson Family YMCA**
151 YMCA Way
San Diego, CA 92102
Through February 7

Report Storm Damage

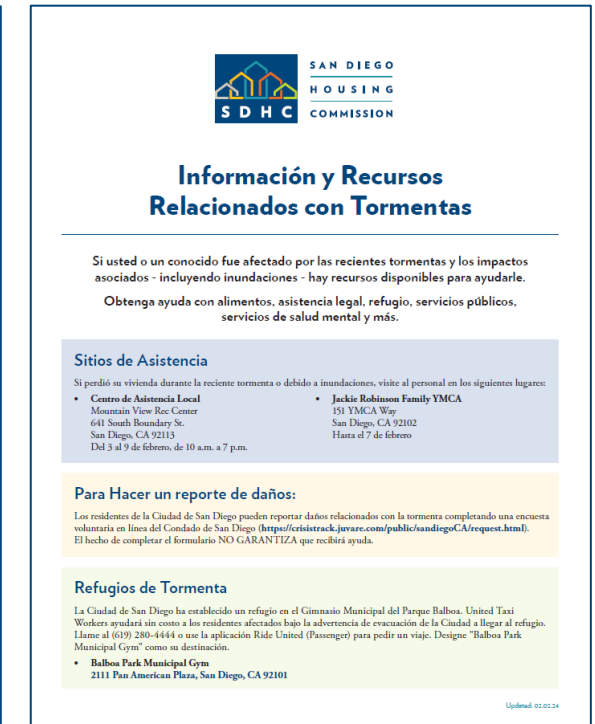
City of San Diego residents can report storm-related damage by completing a voluntary County of San Diego online survey (<https://crisistrack.juware.com/public/sandiegoCA/request.html>). Completing the survey does not guarantee that you will receive disaster relief.

Storm Shelters

The City of San Diego has established a shelter at the Municipal Gym at Balboa Park. United Taxi Workers will help affected residents under the City's evacuation warning get to the shelter at no charge. Call (619) 280-4444 or use the Ride United (Passenger) App to schedule a ride. Designate "Balboa Park Municipal Gym" as your drop-off location.

- **Balboa Park Municipal Gym**
2111 Pan American Plaza, San Diego, CA 92101

Updated: 02.02.24



SAN DIEGO
HOUSING
COMMISSION

Información y Recursos Relacionados con Tormentas

Si usted o un conocido fue afectado por las recientes tormentas y los impactos asociados - incluyendo inundaciones - hay recursos disponibles para ayudarlo.

Obtenga ayuda con alimentos, asistencia legal, refugio, servicios públicos, servicios de salud mental y más.

Sitios de Asistencia

Si perdió su vivienda durante la reciente tormenta o debido a inundaciones, visite al personal en los siguientes lugares:

- **Centro de Asistencia Local**
Mountain View Rec Center
641 South Boundary St.
San Diego, CA 92113
Del 3 al 9 de febrero, de 10 a.m. a 7 p.m.
- **Jackie Robinson Family YMCA**
151 YMCA Way
San Diego, CA 92102
Hasta el 7 de febrero

Para Hacer un reporte de daños:

Los residentes de la Ciudad de San Diego pueden reportar daños relacionados con la tormenta completando una encuesta voluntaria en línea del Condado de San Diego (<https://crisistrack.juware.com/public/sandiegoCA/request.html>). El hecho de completar el formulario NO GARANTIZA que recibirá ayuda.

Refugios de Tormenta

La Ciudad de San Diego ha establecido un refugio en el Gimnasio Municipal del Parque Balboa. United Taxi Workers ayudará sin costo a los residentes afectados bajo la advertencia de evacuación de la Ciudad a llegar al refugio. Llame al (619) 280-4444 o use la aplicación Ride United (Passenger) para pedir un viaje. Designe "Balboa Park Municipal Gym" como su destino.

- **Balboa Park Municipal Gym**
2111 Pan American Plaza, San Diego, CA 92101

Updated: 02.02.24



SDHC – Storm Shelter Programs

SDHC Storm Response (Continued)

Section 8 Housing Choice Voucher Rental Assistance Program

- Out of more than 17,000 Section 8 Housing Choice Voucher participant households:
 - 30 requests for emergency inspections as of February 2, 2024
 - 30 inspections completed
 - 24 units uninhabitable
 - 5 households were provided alternative housing by the landlords.
 - 11 households are living with family or caregiver.
 - 1 household moved to a new unit (approved for SDHC Security Deposit Loan)
 - 7 households are not being provided alternative housing by the landlord. SDHC has provided move packets.
 - 4 are in hotels (3 received assistance from SDHC;s Homelessness Innovations Department)
 - 1 is staying in the unit. Communications with the tenant and landlord continue.
 - 1 is unknown at this time. SDHC Mobility Counseling program continues to try to reach this resident.
 - 1 is no longer staying with family and was referred to a hotel.



SDHC – Storm Shelter Programs

SDHC Storm Response (Continued)

SDHC-Owned Affordable Rental Housing Units

- 48th Street property (Council District 9): 2 units flooded with more than 5 inches of water from an overwhelmed street drain.
 - 1 household submitted notice to vacate and has secured a different rental home.
 - 2 household is in temporary accommodations SDHC has provided, pending completion of unit restoration.
- Altadena Street (Council District 9): 1 unit flooded.
 - Household has been temporarily relocated.
 - Remediation work began January 31, 2024.
- Knox Glen Townhomes (Council District 4): 16 units out of 54 total units experienced varying levels of water intrusion.
 - 1 household requires temporary relocation.
 - Remediation work will occur in phases.
 - Additional relocation may be necessary during remediation.



SDHC – Storm Shelter Programs

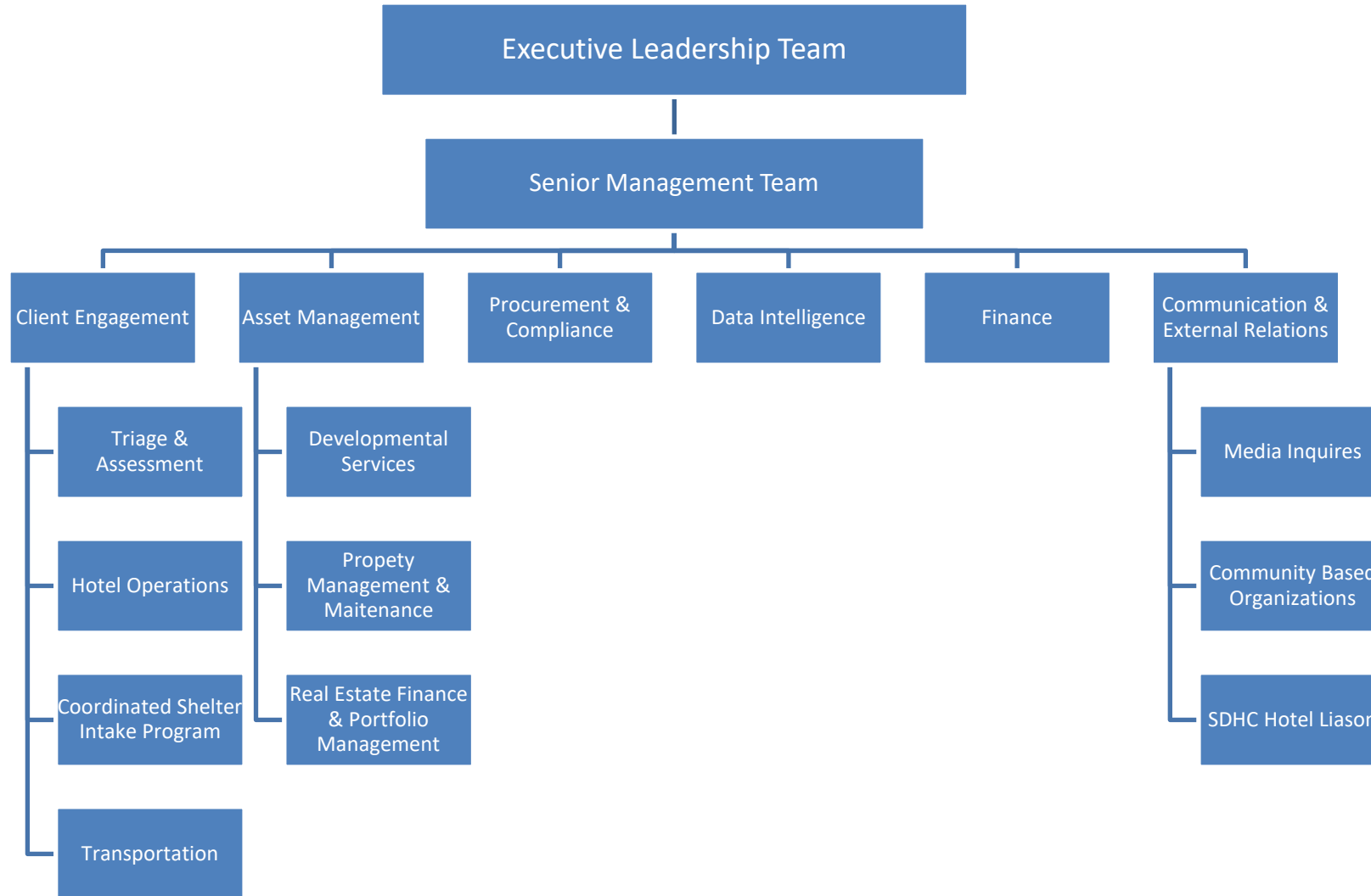
SDHC Storm Response (Continued)

- SDHC established incident command structure and programs to provide emergency referrals for hotel placements for City of San Diego households displaced from their homes.
 - Within the budget authority delegated to SDHC’s President and CEO in the Housing Authority’s approval of SDHC’s Fiscal Year 2024 budget.
- Hotel shelter program is intended to serve as a bridge until County of San Diego resources become available.
- As of February 4, 2024, at 7 p.m.:
 - SDHC triaged 256 households for emergency housing needs.
 - 117 households referred to hotels
 - 41 households placed in former hotel property SDHC recently acquired
 - 98 households connected to other resources
- SDHC does not have any annual budget to support this effort.
 - Working with County of San Diego to understand requirements for potential reimbursement from state or federal emergency resources.



SDHC – Storm Shelter Programs

SDHC Storm Response (Continued)



SDHC – Storm Shelter Programs

SDHC Staff

- SDHC staff participating in emergency shelter programs:
 - **Short-Term Emergency Shelter Program at Midway Drive:**
 - Real Estate Development Team
 - Property Management and Maintenance Team
 - Asset Management Team
 - Rental Assistance Inspections Team
 - Procurement Team
 - Financial Services Team
 - Information Technology Team
 - Grants Team
 - **Program for Referrals for Hotel Placements:**
 - Homelessness Innovations Administrative and Operations Teams
 - Procurement Team
 - Financial Services Team
 - **Public Communication and Outreach**
 - Policy Team
 - Communications & Government Relations Team
 - Rental Assistance Division
 - SDHC General Counsel



SDHC – Storm Shelter Programs Hotel Referrals and Shelter Program

As of 7 p.m. Sunday, February 4:

- More than 250 households triaged for emergency housing needs
 - 117 households referred to hotels
 - 267 adults
 - 133 children
 - 121 pets
 - 35 rooms occupied at SDHC’s Midway Drive Homekey property
 - 64 adults
 - 22 children
 - 11 rooms at Midway property held for 8 referrals and 13 rooms currently vacant.
 - 98 households referred to other resources.



*SDHC Homelessness Innovations Staff
Local Assistance Center*



SDHC – Storm Shelter Programs

Short-Term Emergency Shelter at Midway Drive

- SDHC is using recently acquired property as short-term, emergency storm shelter for households displaced from their homes by the storm and floods.
 - Midway Drive, Council District 2
 - Previously operated as a hotel
 - Acquired to be converted into permanent affordable rental housing units with supportive services for people experiencing homelessness
- City of San Diego, County of San Diego, and State of California Homekey program provided funds for SDHC's purchase of the property.
- State granted emergency approval to allow SDHC to use the property as a short-term storm shelter.



SDHC – Storm Shelter Programs

Short-Term Emergency Shelter at Midway Drive – Operator

- Alpha Project will operate the short-term emergency shelter program through an amendment to an existing contract with SDHC.
- Approximately 30 years of experience serving individuals and families—more than 4,000 men, women and children annually.
- Able to quickly begin operating short-term emergency shelter program at SDHC property.
 - Alpha Project staff and residents of their other programs also experienced significant impacts from the recent storms.



SDHC – Storm Shelter Programs

Short-Term Emergency Shelter at Midway Drive

- February 3, 2024: Final preparations and move-ins of first 30 households



SDHC – Storm Shelter Programs

Staff Recommendations

That the Housing Authority of the City of San Diego take the following actions:

- 1) Authorize SDHC to revise and amend its Fiscal Year 2024 budget in an amount up to \$2,250,000 to allow the use of any appropriate and eligible funding sources to implement and temporarily fund a hotel shelter program and short-term emergency shelter and assistance program, pending potential reimbursement from other sources of funds, which may include philanthropic resources.
- 2) Authorize SDHC to expend \$1,500,000 toward the hotel shelter program and short-term emergency shelter and assistance program operations and administration to serve households displaced from their homes due to recent storms and flooding in the City of the San Diego. Assistance through these programs would include temporary housing and limited meals for participating households.



SDHC – Storm Shelter Programs Staff Recommendations (Continued)

- 3) Authorize SDHC's President and Chief Executive Office (President and CEO), exercising reasonable discretion, without further action by either the SDHC Board of Commissioners (Board) or the Housing Authority, to expend additional SDHC funds toward the hotel shelter program and short-term emergency shelter and assistance program operations and administration in intervals up to \$250,000 each, as needed, as long as the total expended on program operations and administration does not exceed \$2,250,000. SDHC's President and CEO shall provide no less than 24 hours' advance written notice of the decision to authorize the SDHC's expenditure of the additional funds at each \$250,000 interval, exercising reasonable discretion, to each Housing Authority member.



SDHC – Storm Shelter Programs Staff Recommendations (Continued)

- 4) Authorize SDHC’s President and CEO, or designee, to enter into contracts with hotel shelter program and short-term emergency shelter and assistance program operators or additional vendors identified and selected in accordance with SDHC’s Procurement Policy PO-PUR-373.01 as needed for program operations and administration without further approval by the SDHC Board or the Housing Authority.
- 5) Authorize the Housing Commission’s President and CEO, or designee, to execute all documents and agreements necessary to effectuate these authorizations, in a form and format approved by General Counsel, and to take such steps as are necessary to implement the actions authorized by the Housing Authority. Housing Commission staff will notify the Housing Authority and the City Attorney’s Office about any subsequent amendments or modifications to the documents, and other required documents, including amendments to any documents.



SDHC – Storm Shelter Programs

Questions & Comments

